

## Analysis of the Nicotine content in Tobacco by Focus Direct TD–GC/MS

Sjaak de Koning.

- *Direct desorption from sample matrix to column*
- *No manual sample preparation*
- *May be automated using the Focus and LINEX*

### Instrumentation

---

- Optic 2-200 programmable injector
- Focus Direct-TD automated thermal desorber
- ATAS SepLiner
- Agilent 6890 GC
- Agilent 5973 MSD

### Sample analysed

---

Nicotine in tobacco leaves (for the cigar industry)

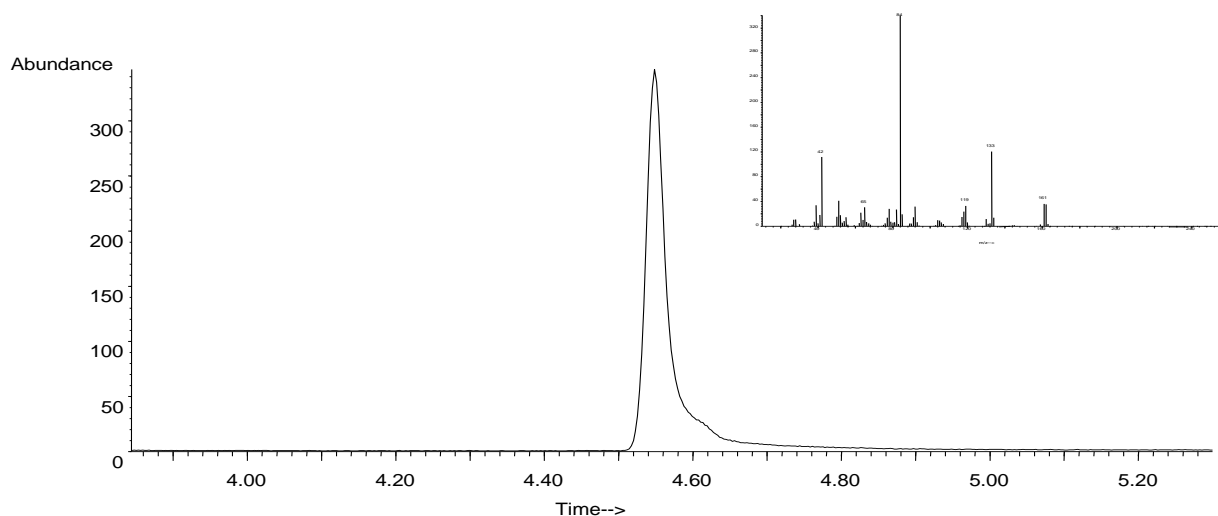
### Principles

---

- Weigh tobacco sample into the SepLiner
- Cap the liner and place into the Focus Direct-TD sample tray
- Place SepLiner automatically into the Optic injector
- Purge the SepLiner with carrier gas
- Desorb the nicotine from the tobacco, transfer directly to the capillary GC column and start the GC–MS analysis
- After analysis and cooling the GC oven automatically remove the SepLiner and place next one for analysis

### Chromatogram

---



**Figure:** Extracted ion ( $m/z=84$ ) DTD–GC/MS chromatogram of tobacco and mass spectrum of peak (Nicotine)  
For more information please contact us at one of the addresses below.