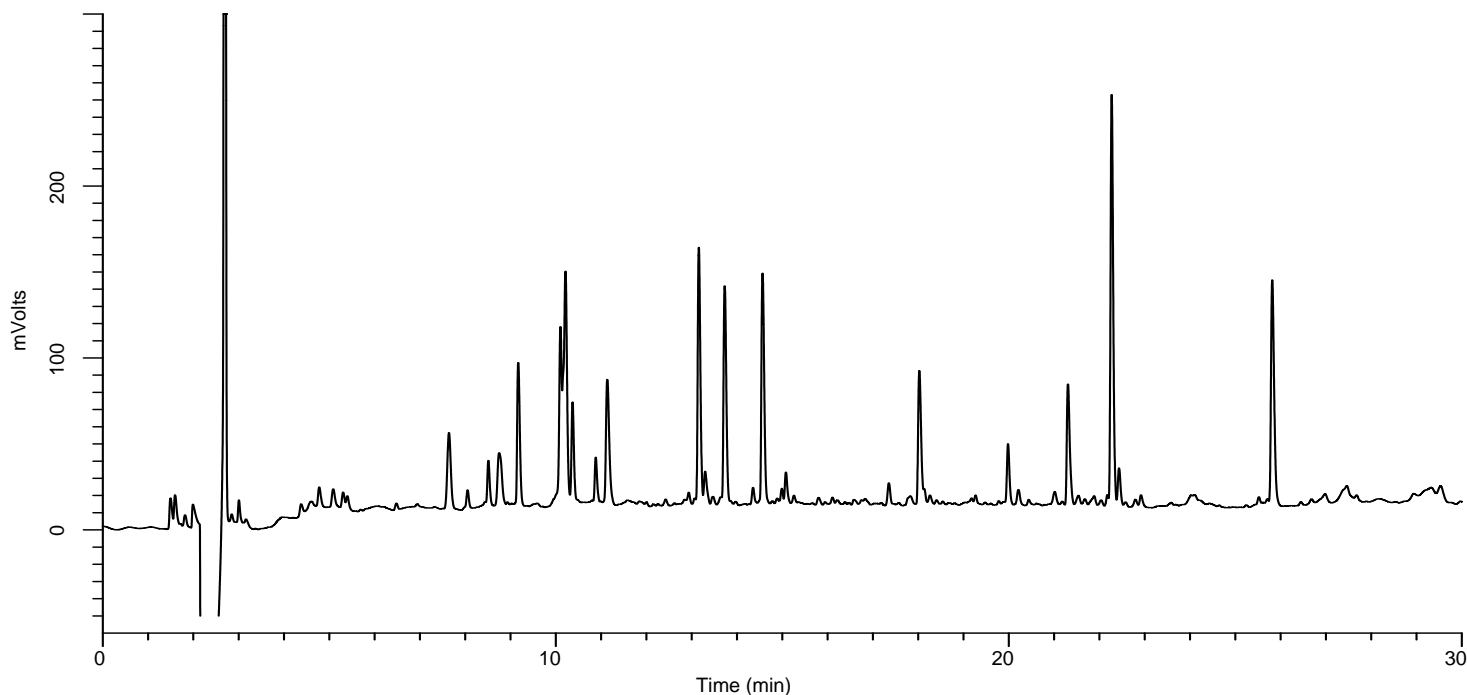


# InertSearch™ for LC

Inertsil® Applications

## Analysis of Myoglobin Digests

Data No. LB439-0812



### Conditions

**System** : LC800 HPLC system  
**Column** : InertSustain AQ-C18  
(1.9  $\mu$  m, 150 x 2.1 mm I.D.)  
**Column Cat. No.** : 5020-89940  
**Eluent** : A) 0.1% TFA in CH<sub>3</sub>CN  
B) 0.1% TFA in H<sub>2</sub>O  
A/B = 10/90 - 30 min - 50/50 - 0.1 min - 90/10  
- 5 min - 90/10 - 0.1 min - 10/90 - 15 min  
**Flow Rate** : 0.2 mL/min  
**Col. Temp.** : 40 °C  
**Detection** : UV 210 nm  
**Injection Vol.** : 10  $\mu$  L

### Analyte:

Tryptic Digest of Myoglobin (0.5 mg/mL)