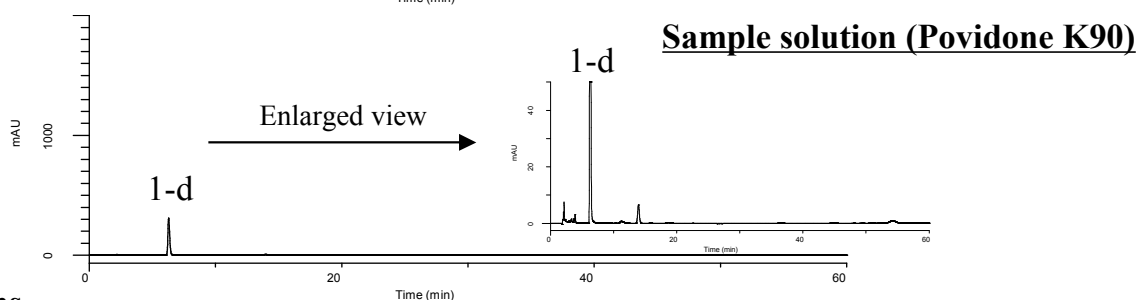
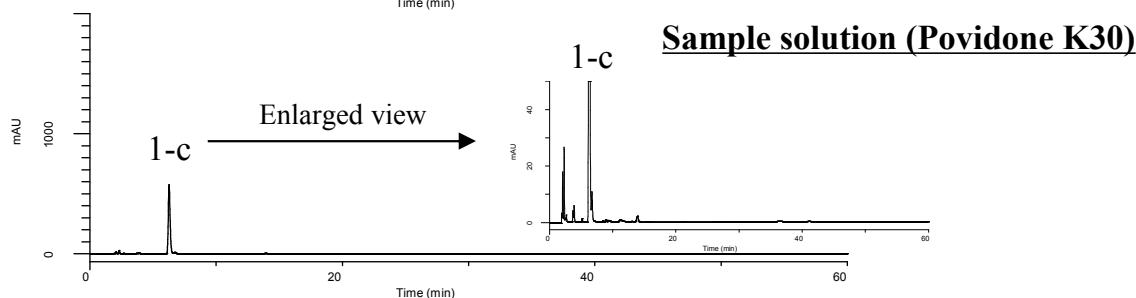
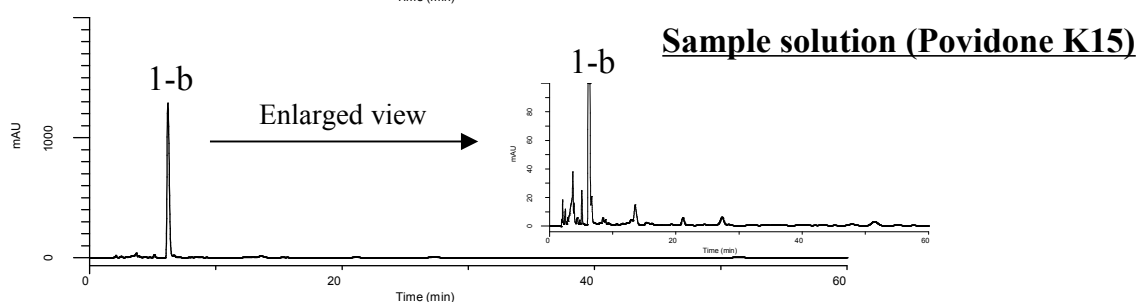
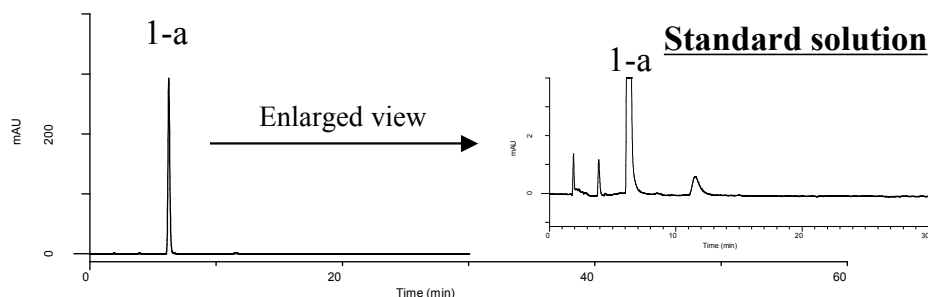


Analysis of Povidone

(Under the Condition of the Japanese Pharmacopoeia 17th edition, (6) 2-Pyrrolidone)

Data No. LB435-0894



Conditions

System : GL7700 HPLC system
Guard Column : InertSustain AQ-C18
 (5 μ m, 10 x 4.0 mm I.D.)
Guard Column
Cat. No. : 5020-89805 (Holder/Cartridge Set)
 or 5020-89804 (Replacement Cartridge)
Column : InertSustain AQ-C18
 (5 μ m, 150 x 4.6 mm I.D.)
Column Cat. No. : 5020-89730
Eluent : A) CH₃OH
 B) H₂O
 A/B = 1/19, v/v
Flow Rate : 0.8 mL/min
Col. Temp. : 40 °C
Detection : UV 205 nm (PD7752 PDA Detector)
Injection Vol. : 50 μ L
Sample : Povidone

Analyte

1. 2-Pyrrolidone

Theoretical plate number (1-a) : 8,900 (\geq 5,000)
 Tailing factor (1-a) : 1.19 (\leq 1.5)
 RSD of the
 1-a area (%) (n = 6) : 0.05 (\leq 2.0)