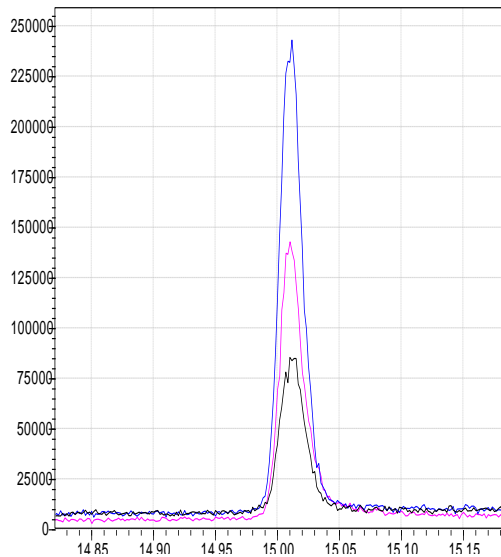
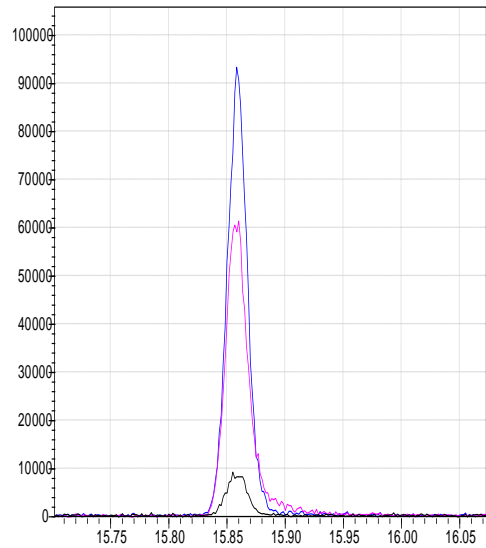


# Solutions for Residue Analysis

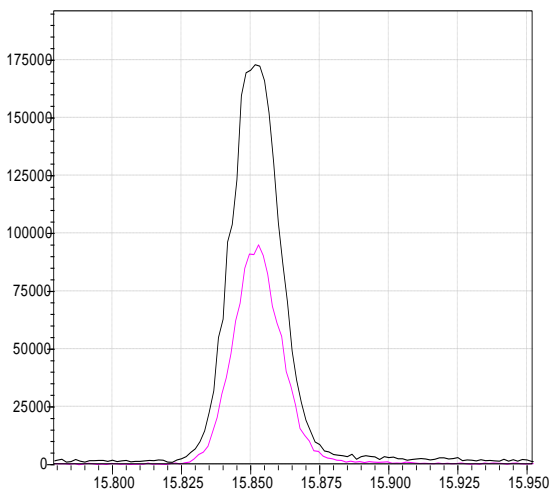
The liner with InertMask silanisation can improve the recovery for degradable pesticides at lower detection limits using cold injection techniques like splitless or LVI!



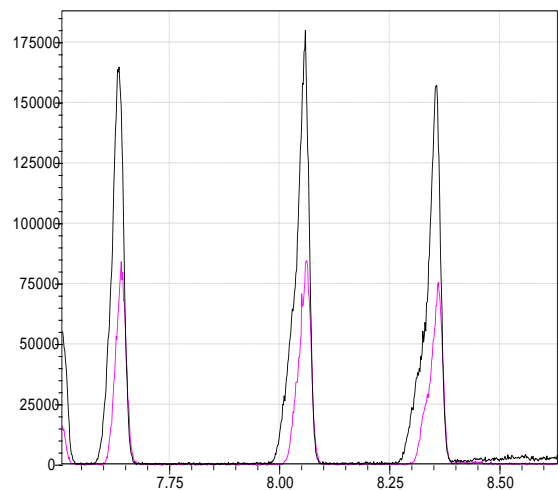
**Splitless: 1 $\mu$ L** Carbamazepine, m/z 193  
 Pink: Commercially available liner  
 Black: Sintered liner with commercially available silanisation  
 Blue: InertMask Sintered liner



**Splitless: 1 $\mu$ L** Azinphos-Methyl, m/z 160  
 Pink: Commercially available liner  
 Black: Sintered liner with commercially available silanisation  
 Blue: InertMask Sintered liner



**LVI: 25 $\mu$ L** Azinphos-Methyl, m/z 160  
 Pink: Sintered liner with commercially available silanisation  
 Black: InertMask Sintered liner



**LVI: 25 $\mu$ L** m/z 180 Benzene, 1,3,5-trichloro-  
 Benzene, 1,2,3-trichloro-  
 Benzene, 1,3,5-trichloro-  
 Pink: Sintered liner with commercially available silanisation  
 Black: InertMask Sintered liner

P#	Description
2414-1008	Sintered Glass Liner included InertMask silanisation with Taper (pack of 5)