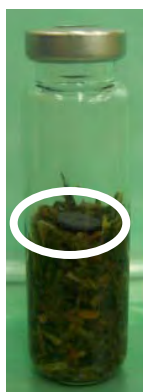
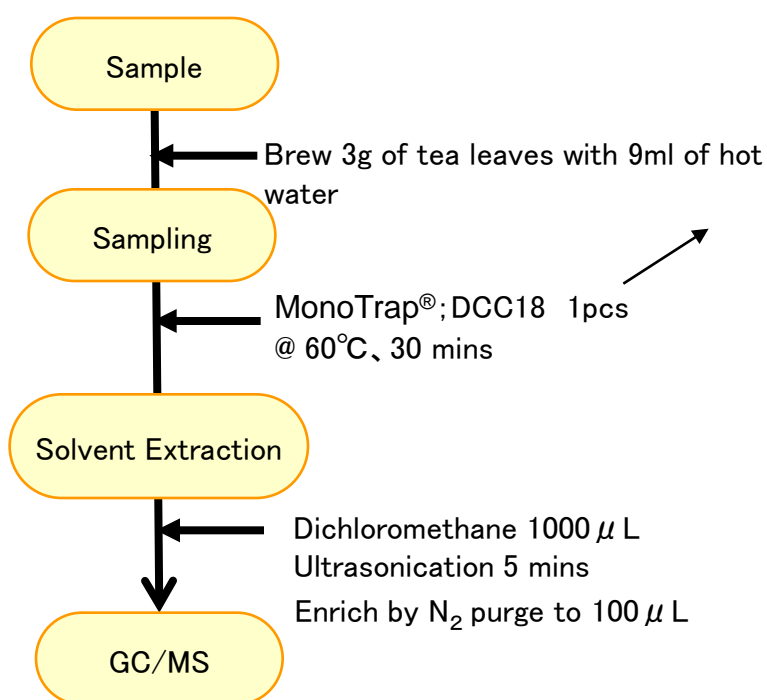


Protocol



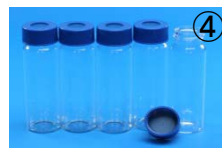
③ MT Extract Cup with Vial

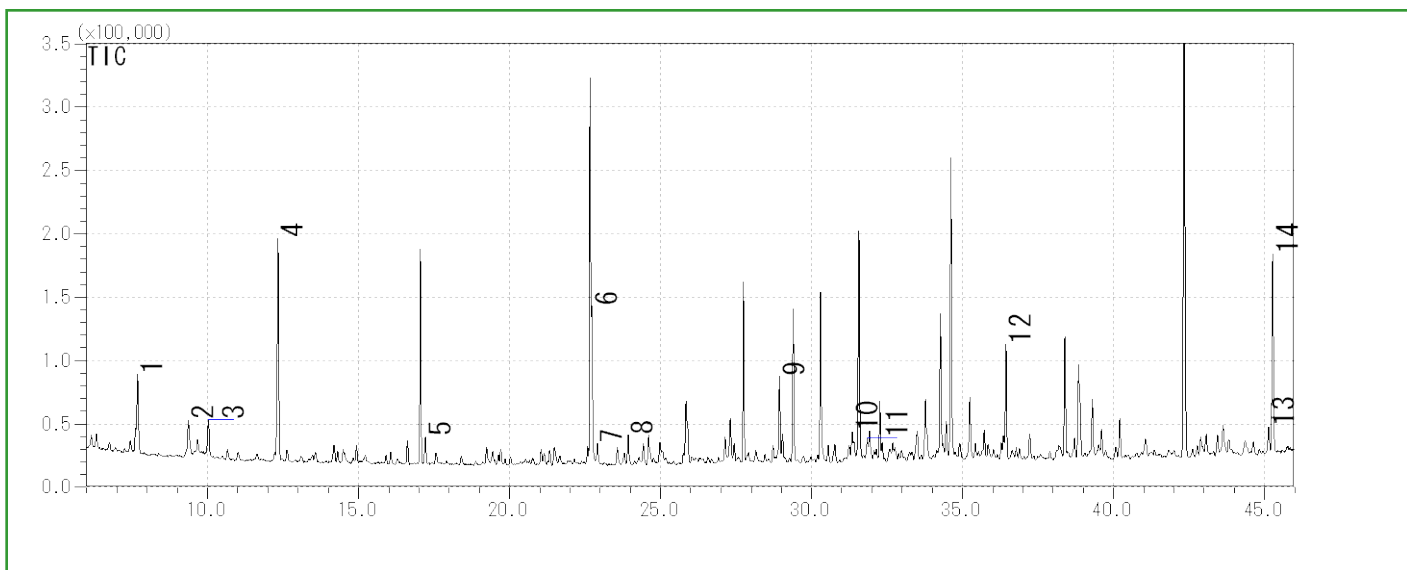
GC Condition

System	: SHIMADZU GC-2010, GCMS-QP2010Plus
Column	: InertCap Pure-WAX (Cat. 1010-68142) 0.25mm I.D. \times 30m df=0.25 μ m
Column Temp	: 40°C (5min) \rightarrow 4°C/min \rightarrow 250°C
Carrier Gas	: He 120kPa
Injection	: Splitless, 1 μ L 250°C
Detection	: MS Scan (m/z; 40-350)

MonoTrap[®] Convenient MonoTrap[®] Start-UP-KIT

	Description	Qty
①	MT Holder	5
②	MT Stand	1
③	MT Extract Cup with Vial (20ml)	5
④	Clean Pin Hole Septum with vial (40ml)	5
⑤	200 μ L Glass Insert (Flat Bottom)	40
⑥	MonoTrap [®] DCC18	20
⑦	MonoTrap [®] RCC18	20
⑧	MonoTrap [®] DSC18	20
⑨	MonoTrap [®] RSC18	20





- | | | | |
|---|--------------------------|----|-----------------------------------|
| 1 | Isobutenyl methyl ketone | 8 | 1-Ethyl-1H-pyrrole-2-carbaldehyde |
| 2 | 3-Penten-2-ol | 9 | Epoxy linalol |
| 3 | D-Limonene | 10 | trans-Geraniol |
| 4 | 1-Pentanol | 11 | Benzyl alcohol |
| 5 | Nonanal | 12 | trans-Nerolidol |
| 6 | Dimethyl sulfoxide | 13 | Coumarine |
| 7 | 1-Octanol | 14 | Indole |

Red...[Food] Fragrance Encyclopedia by Japan Perfumery & Flavoring Association

Ultra inert WAX column **InertCap Pure-WAX** is highly recommended to analyze aromatic compounds together with **MonoTrap®**

<http://www.gls.co.jp/gc.html>