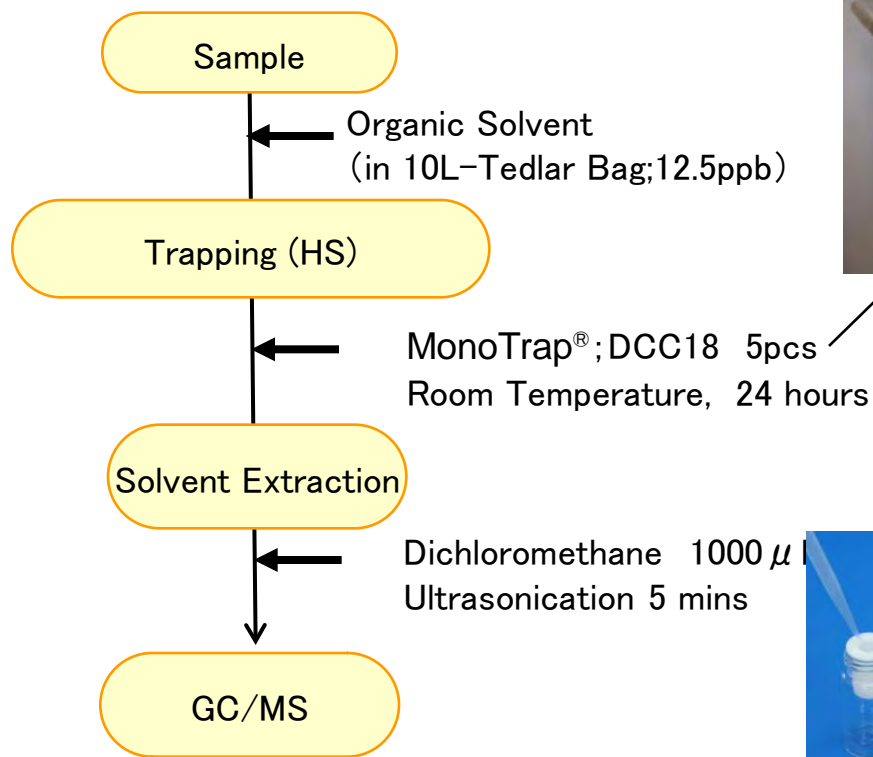


## Protocol

GC Condition

**System** : SHIMADZU GC-2010, GCMS-QP2010

**Column** : InertCap Pure-WAX  
0.25mm I.D.  $\times$  30m  $d_f$ =0.25  $\mu$ m

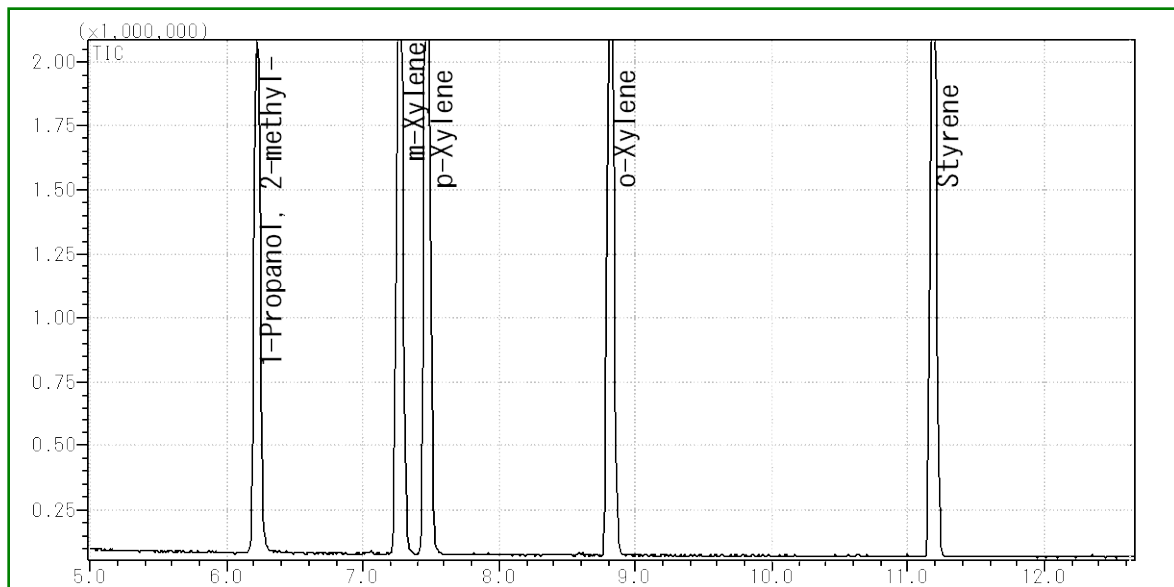
**Column Temp** : 40°C(5min) $\rightarrow$ 5°C/min $\rightarrow$ 120°C $\rightarrow$ 20°C/min $\rightarrow$ 250°C

**Carrier Gas** : He 1.15mL/min

**Injection** : Split 1:100, 1  $\mu$ L  
250°C

**Detection** : MS Scan (m/z;25-450)

Ultra inert WAX column **InertCap Pure-WAX** is highly recommended to analyze aromatic compounds together with **MonoTrap<sup>®</sup>**



MonoTrap® Series

cat.No	Description	Shape	Size	Active Carbon	Functional Group
1050-72101	MonoTrap DCC18	Disk	O.D.10mmx thick 1mm	Yes	C18
1050-72201	MonoTrap RCC18	Rod	5mm	Yes	C18
1050-71101	MonoTrap DSC18	Disk	O.D.10mmx thick 1mm	No	
1050-71201	MonoTrap RSC18	Rod	5mm	No	C18



DCC18



RCC18



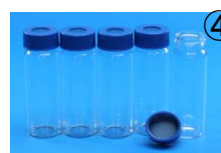
DSC18



RSC18

MonoTrap® Convenient MonoTrap® Start-UP-KIT

	Description	Qty
①	MT Holder	5
②	MT Stand	1
③	MT Extract Cup with Vial(20ml)	5
④	Clean Pin Hole Septum with vial(40ml)	5
⑤	200 μ L Glass Insert (Flat Bottom)	40
⑥	MonoTrap® DCC18	20
⑦	MonoTrap® RCC18	20
⑧	MonoTrap® DSC18	20
⑨	MonoTrap® RSC18	20



<http://www.gls.co.jp/gc.html>