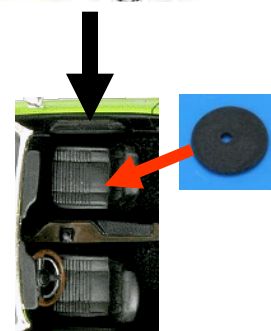
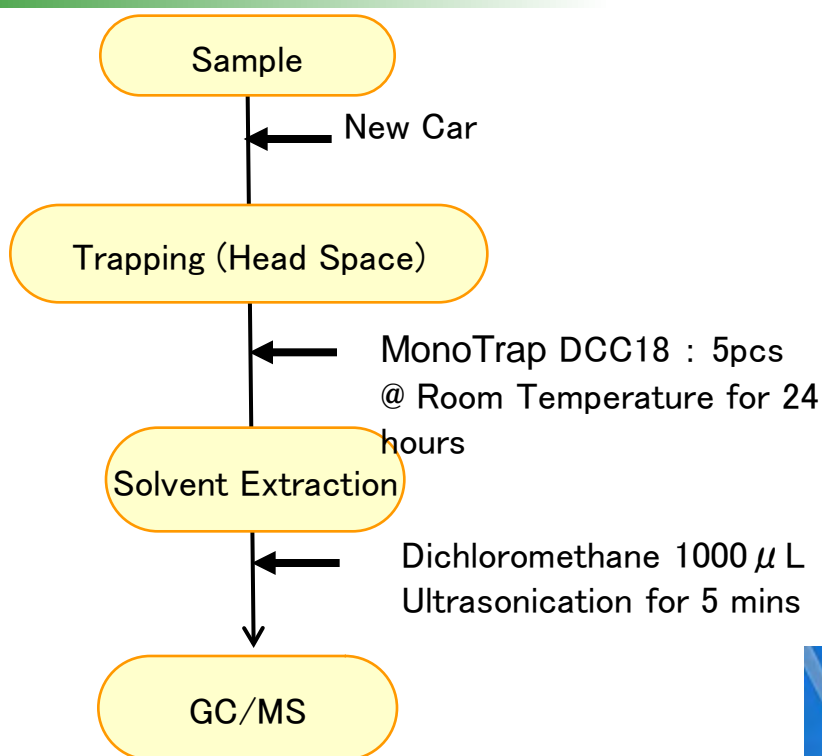


Protocol

**GC Condition**

System : SHIMADZU GC-2010、GCMS-QP2010 Plus

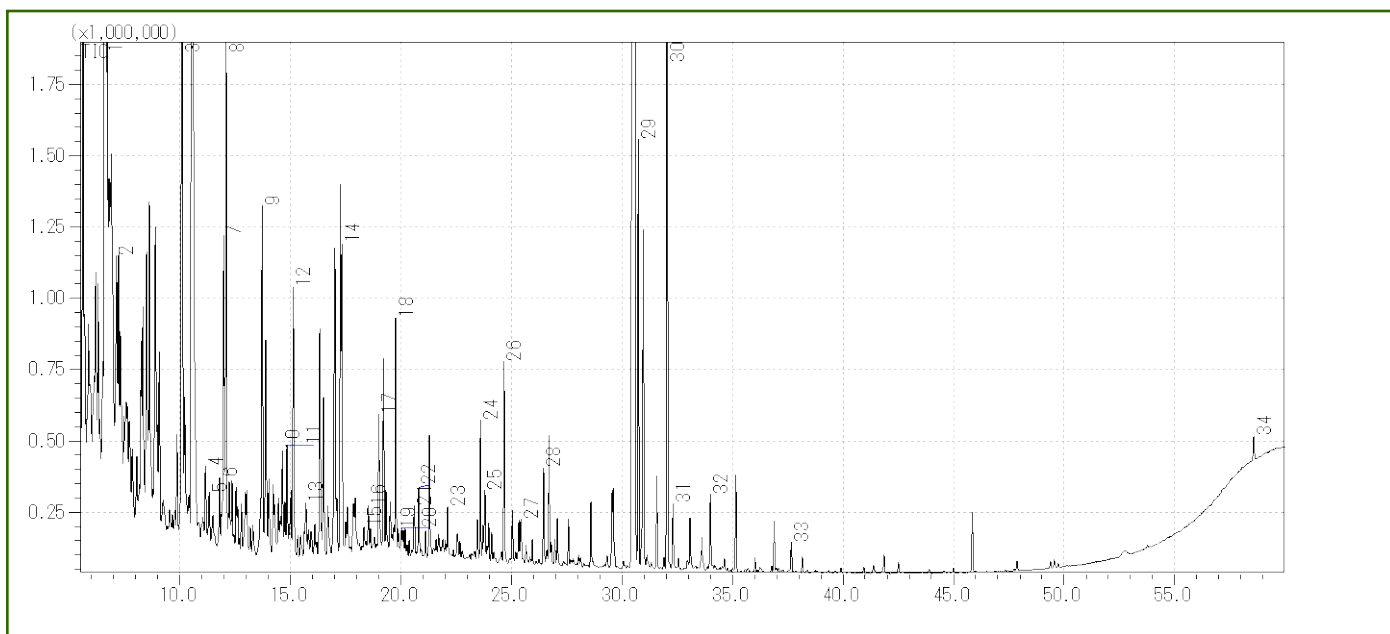
Column : InertCap Pure-WAX Cat.1010-68142
0.25mmI.D. × 30m df=0.25 µ m

Column Temp : 40°C(5min)→4°C/min→250°C

Carrier Gas : He 120kPa

Injection : Split less, 1 µ L
250°C

Detection : MS Scan (m/z 20-350)



- | | |
|----------------------------|--|
| 1 Undecane | 18 Ethylhexanol |
| 2 o-xylene | 19 Decanal |
| 3 Dodecane | 20 Benzaldehyde |
| 4 Styrene | 21 Pentadecane |
| 5 m-EthylMethylToluene | 22 Nonadecane |
| 6 Pentadecane | 23 α -Isophoron |
| 7 1, 3, 5-TrimethylBenzene | 24 tetramethylbutanedinitrile |
| 8 Hexadecane | 25 Hexadecane |
| 9 Tridecane | 26 TEP |
| 10 4-ethyl-o-xylene | 27 Eicosane |
| 11 o-Cymene | 28 Naphthalene |
| 12 3-ethyl-o-xylene | 29 3-Hydroxy-2, 2, 4-trimethylpentyl ester of isobutanoic acid |
| 13 p-Cymene | 30 BHT |
| 14 Durene | 31 Benzothiazole |
| 15 Furfural | 32 Phenol |
| 16 p-Ethylstyrene | 33 Caprolactam |
| 17 Durene | 34 Di-n-octyl phthalate |