

## Easy Concentration &amp; Analysis of Maple Syrup by MonoTrap® - Thermal Desorption

## Protocol

Maple Syrup

Put 20 g into a 40 mL vial

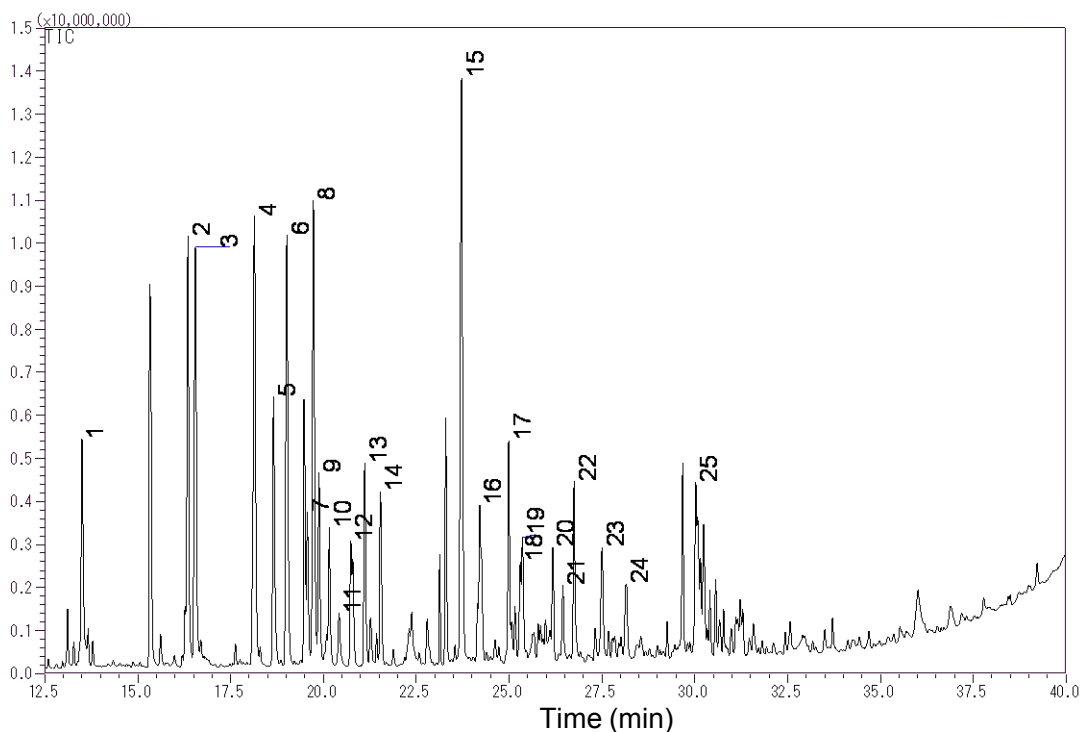
Head Space Sampling  
MonoTrap RGC18 TD × 1 pcs

At 60 °C for 12 hours

TD/GC/MS

## GC Conditions

<b>System</b>	: GC/MS-Thermal Desorption (T-Dex II)
<b>Column</b>	: InertCap Pure-WAX 0.25 mm I.D. × 60 m, df = 0.25 μm
<b>Col.Temp.</b>	: 40 °C (5 min) - 6 °C/min - 250 °C
<b>Carrier Gas</b>	: He, 1 mL/min (constant flow)
<b>Desorb Temp.</b>	: 200°C
<b>Time</b>	: 5 min
<b>Flow</b>	: 5 mL/min
<b>Split</b>	: 25 mL/min
<b>Cryo Trapping</b>	: -150°C
<b>Injection Temp.</b>	: 250°C
<b>Detection</b>	: MS Scan (28.5 - 600 m/z)



- |                               |   |
|-------------------------------|---|
| 1. Isobutyl alcohol           | 14. Trimethylpyrazine   |
| 2. D-Limonene                 | 15. 5-c-Acetyl-1,4-anhydro-2,6-dideoxy-1,4-dimethylhex-1-en-3-ulose |
| 3. Isopentyl alcohol          | 16. Thymine   |
| 4. Methylpyrazine             | 17. 2,3-Butanediol  |
| 5. Acetyl methyl carbinol     | 18. Propylene Glycol  |
| 6. Hydroxyacetone             | 19. 3-Methylenedihydro-2(3H)-furanone                               |
| 7. Dimethylpyrazine           | 20. m-Methoxytoluene  |
| 8. Dimethylpyrazine           | 21. 2-Acetyl-4-methylpyridine                                       |
| 9. Ethylpyrazine              | 22. 2-Furanmethanol   |
| 10. Dimethylpyrazine          | 23. 3-Ethyl-2-hydroxy-2-cyclopenten-1-one                           |
| 11. 2-Cyclopenten-1-one       | 24. 3-Methyl-2(5H)-furanone   |
| 12. 2-Methyl-2-cyclopentenone | 25. 2-Hydroxy-1-methylcyclopenten-3-one                             |
| 13. 2-Ethyl-6-methylpyrazine  |   |

※ライブラリ検索結果による

**Products Line UP**



MonoTrap-TD Glass Tube



1050-74201 1050-73201

**MonoTrap-TD**

1050-73201 RSC18TD (ODS,SilicaGel)30pcs

1050-74201 RGC18TD (Graphite Carbon contained)30Pcs

**MonoTrap-TD Glass Tube**

1003 -75001 Linex -MT Tube

1003 -75002 TD20/TDex/ATD-MT Tube

**Easy 3 Steps**

**1. Open the Ampoul**



Ready-to-use and pre-conditioned MonoTrap TD are delivered in ampoules .



**2. Sampling**



**Samples:**

Flower, Food, Alcohol etc...

Hang the MonoTrap for TD in a tedlar bag or a vial to trap the target compounds. No need to use pumps.

● Head Space Sampling

● Stirring Sampling

● Passive Sampling



**3. Analysis**



Inert MonoTrap into a glass tube and GC • GC/MS